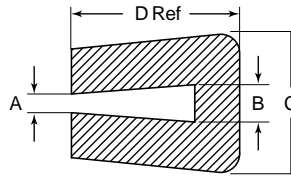
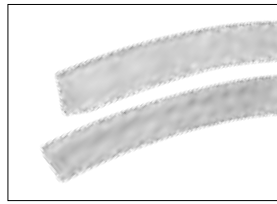


GROMMET EDGING



GE Continuous Grommet Edging



Specifications:

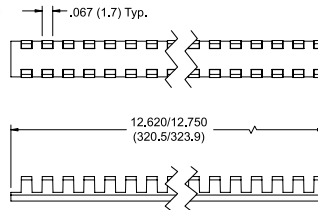
- Material: Polyethylene
- Color: Natural

Features:

- Provides protection for sharp edges
- Cut to required length to fit edging

Item No.	A		B		C		D		Max Chassis Thickness		Roll Length	
	In	mm	In	mm	In	mm	In	mm	In	mm	Ft	m
GE001A	0.010	0.50	0.039	1.00	0.189	3.60	0.125	3.2	0.032 - 0.039	0.8 - 1.0	32.8	10
GE002A	0.024	0.60	0.047	1.20	0.148	3.40	0.125	3.2	0.039 - 0.047	1.0 - 1.2	32.8	10
GE003A	0.035	0.90	0.063	1.60	0.248	4.60	0.140	3.6	0.047 - 0.063	1.2 - 1.6	32.8	10
GE004A	0.043	1.10	0.079	2.00	0.177	4.10	0.150	3.8	0.063 - 0.079	1.6 - 2.0	32.8	10
GE005A	0.047	1.20	0.095	2.40	0.197	5.10	0.175	4.5	0.079 - 0.094	2.0 - 2.4	32.8	10
GE006A	0.059	1.50	0.126	3.20	0.252	5.80	0.195	5.0	0.094 - 0.126	2.4 - 3.2	32.8	10

MGS MS21266 Grommet Strip



Specifications:

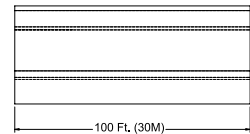
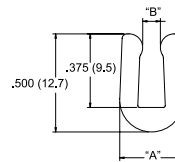
- Material: UL94 V-2 Nylon 6/6
- Color: Natural

Features:

- Ideally suited to cover normal and irregular shaped holes in sheet metal
- Complies with NASM21266
- Minimum hole diameter is 1"

Item No.	Militart Part Number	Panel Thickness	A	B	C	D	Bulk Pack Qty.
MGS-1-01	MS21266-1N	.015-.052	0.150	0.056	0.055	0.100	100
MGS-2-01	MS21266-2N	.052-.085	0.175	0.090	0.055	0.100	100
MGS-3-01	MS21266-3N	.085-.128	0.220	0.131	0.055	0.100	100
MGS-4-01	MS21266-4N	.128-.192	0.325	0.195	0.070	0.160	100
MGS-5-01	MS21266-5N	.192-.255	0.385	0.260	0.070	0.170	100
MGS-6-01	MS21266-6N	.255-.318	0.445	0.320	0.075	0.180	100
MGS-8-01	MS21266-8N	.380-.510	0.640	0.515	0.075	0.180	50

RG Rubber Grommet Edging



Specifications:

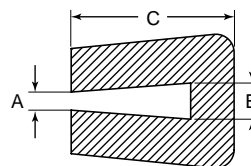
- Material: TPE
- Color: Black

Features:

- Supplied in rolls that can be cut to required length
- Prevents wires & cables from chafing against sharp edges

Item No.	Fits Panel Thickness		A Ref		B Max		Roll Length	
	In	mm	In	mm	In	mm	Ft	m
RG-1	0.063	1.6	0.264	6.7	0.030	0.8	100	30
RG-2	0.093	2.4	0.293	7.4	0.060	1.5	100	30
RG-3	0.125	3.2	0.324	8.2	0.090	2.3	100	30

GRE PVC Grommet Edging



Specifications:

- Material: Soft PVC
- Color: Black

Features:

- Protects sharp or delicate edges
- Fits irregular shapes and a range of panel thicknesses
- PVC material is non-staining; resistant to ozone, acids, and sunlight; with excellent aging qualities

Item No.	Panel Thickness A		Panel Thickness B		Overall Width C		Roll Length	
	In	mm	In	mm	In	mm	Ft	m
GRE32343A	0.031	0.78	0.047	1.19	0.276	7.01	164	50
GRE34074A	0.039	0.99	0.079	2.00	0.315	8.00	164	50
GRE34075A	0.059	1.49	0.110	2.79	0.374	9.50	164	50
GRE34076A	0.106	2.69	0.149	3.78	0.413	10.49	164	50
GRE34077A	0.146	3.70	0.204	5.18	0.433	11.00	164	50
GRE34078A	0.209	5.30	0.267	6.78	0.512	13.00	164	50